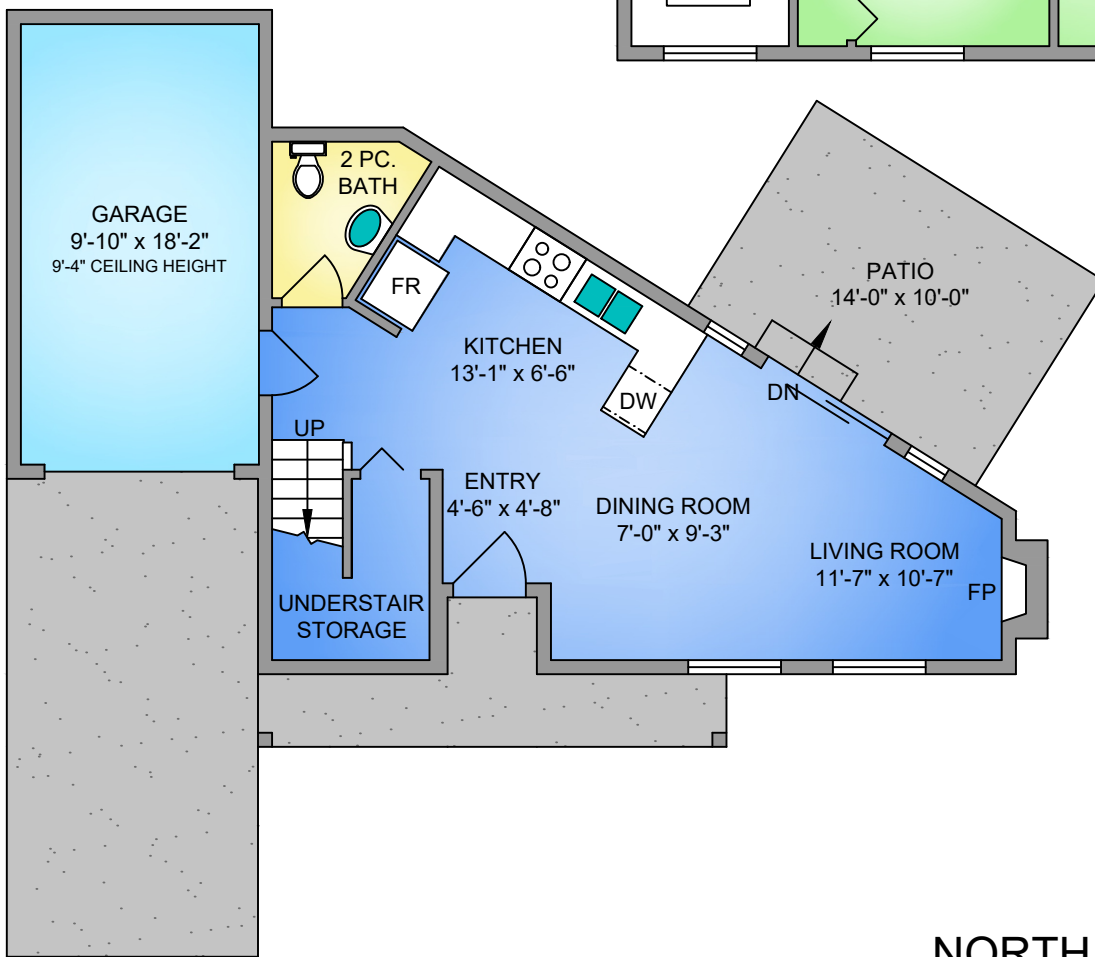
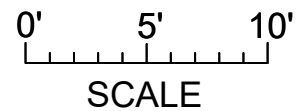
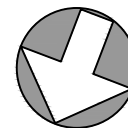


MAIN FLOOR
496 SQ. FT.
9'-0" CEILING HEIGHT



NORTH



250-884-9753
 matt@propermeasure.com
 www.propermeasure.com

912 ROSEFINCH PLACE			
APRIL 16, 2026			
PREPARED FOR THE EXCLUSIVE USE OF PREFERRED HOMES TEAM PLANS MAY NOT BE 100% ACCURATE. IF CRITICAL BUYER TO VERIFY.			
FLOOR	AREA (SQ. FT.)		
	FINISHED	GARAGE	PATIO
MAIN	496	208	140
UPPER	752	-	-
TOTAL	1248	208	140

FIRST FLOOR

487 SQ. FT.

8'-0" CEILING HEIGHT

SECOND FLOOR

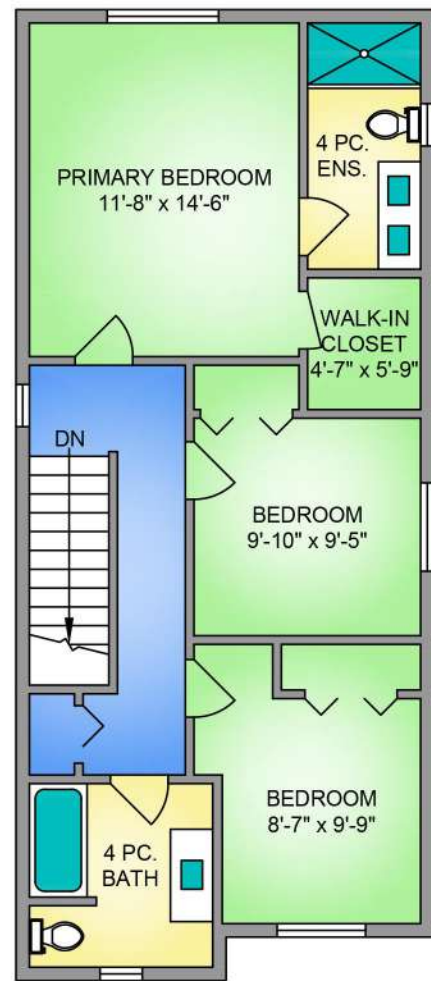
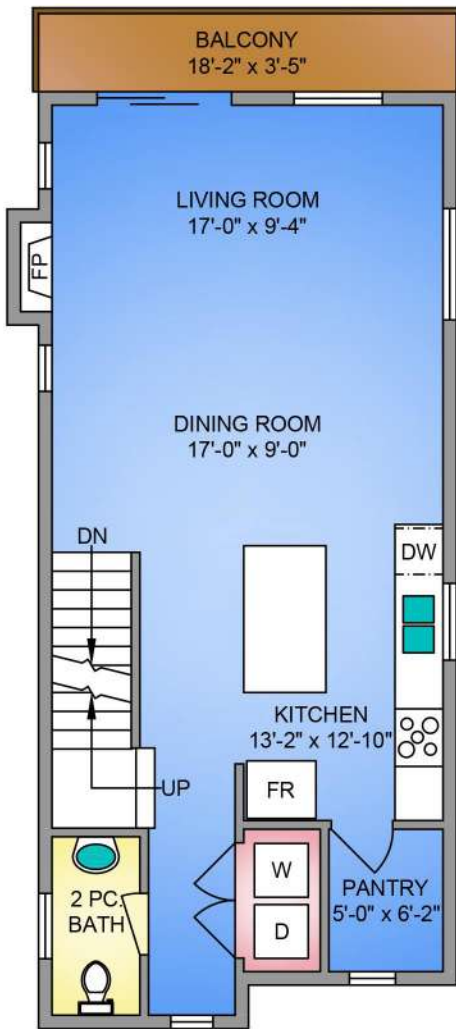
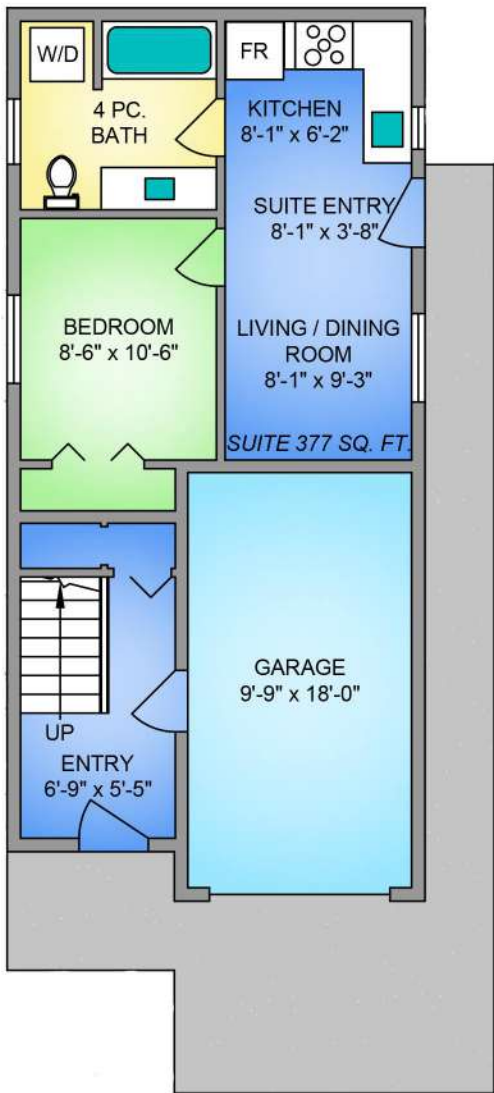
720 SQ. FT.

9'-0" CEILING HEIGHT

THIRD FLOOR

747 SQ. FT.

8'-0" CEILING HEIGHT



NORTH



THE PREFERRED HOMES TEAM
 RE/MAX CAMOSUN preferredhomes.ca

PROPER MEASURE PRECISION 250-884-9753
 matt@propermeasure.com www.propermeasure.com

RosefinchLiving.ca

924 ROSEFINCH PLACE			
JANUARY 07, 2026			
PREPARED FOR THE EXCLUSIVE USE OF THE PREFERRED HOMES TEAM PLANS MAY NOT BE 100% ACCURATE, IF CRITICAL BUYER TO VERIFY.			
FLOOR	AREA (SQ. FT.)		
	FINISHED	GARAGE	BALCONY
FIRST	487	200	-
SECOND	720	-	62
THIRD	747	-	-
TOTAL	1954	200	62