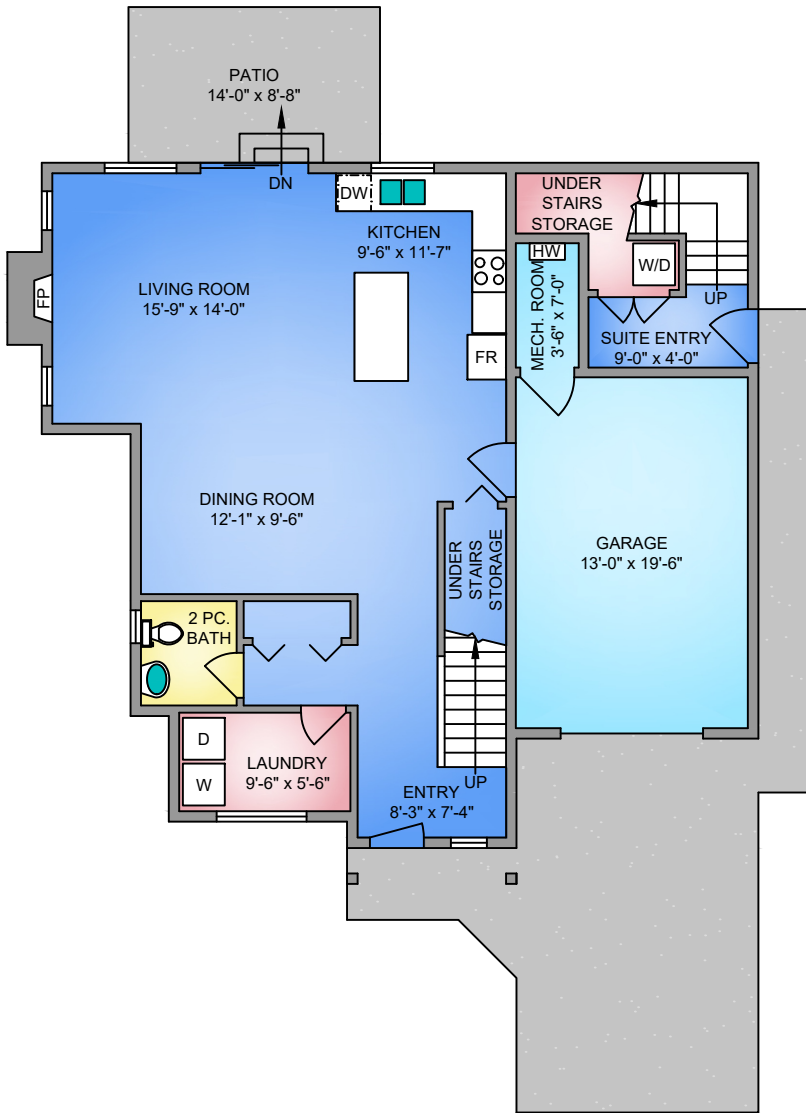
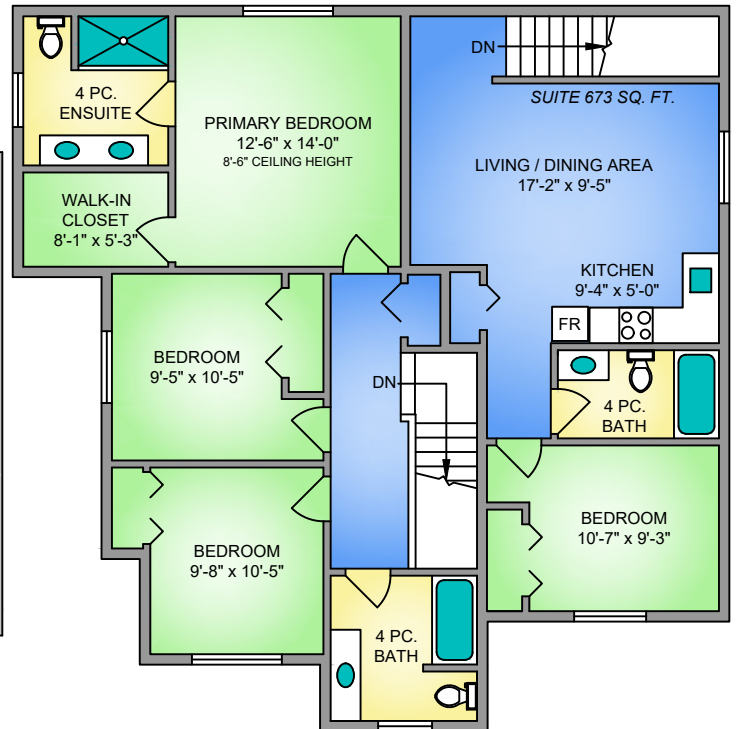


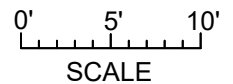
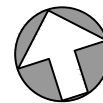
**MAIN FLOOR**  
**984 SQ. FT.**  
 9'-0" CEILING HEIGHT



**UPPER FLOOR**  
**1345 SQ. FT.**  
 8'-0" CEILING HEIGHT



NORTH



RosefinchLiving.ca

905 ROSEFINCH PLACE FEBRUARY 10, 2026 PREPARED FOR THE EXCLUSIVE USE OF PREFERRED HOMES TEAM. PLANS MAY NOT BE 100% ACCURATE. IF CRITICAL BUYER TO VERIFY.			
FLOOR	AREA (SQ. FT.)		
	FINISHED	GARAGE	PATIO
MAIN	984	311	114
UPPER	1345	-	-
<b>TOTAL</b>	<b>2329</b>	<b>311</b>	<b>114</b>

FIRST FLOOR

487 SQ. FT.

8'-0" CEILING HEIGHT

SECOND FLOOR

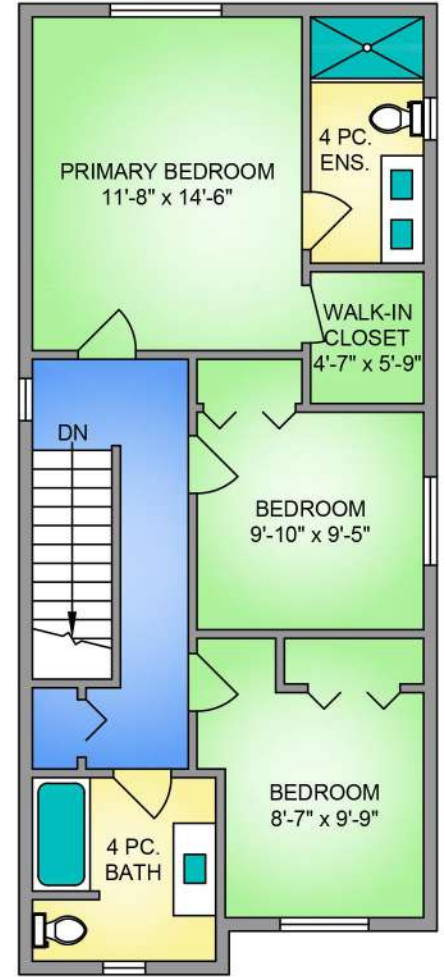
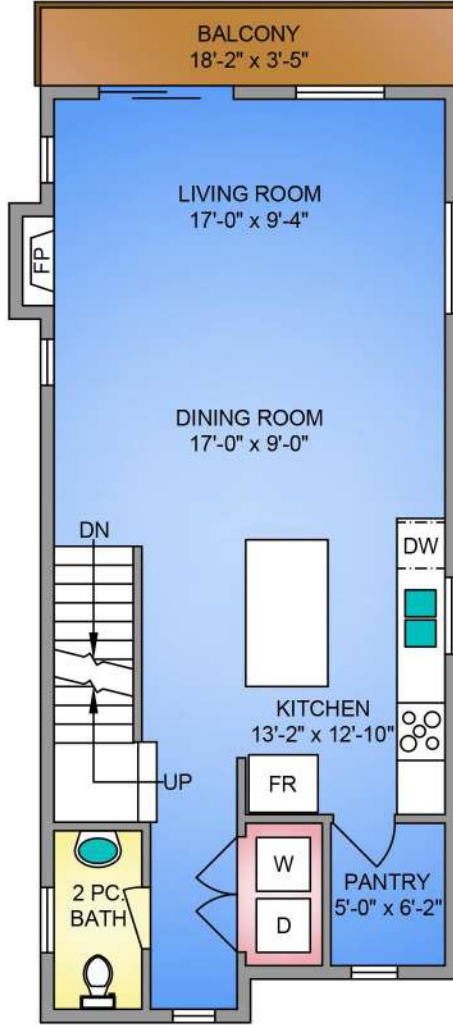
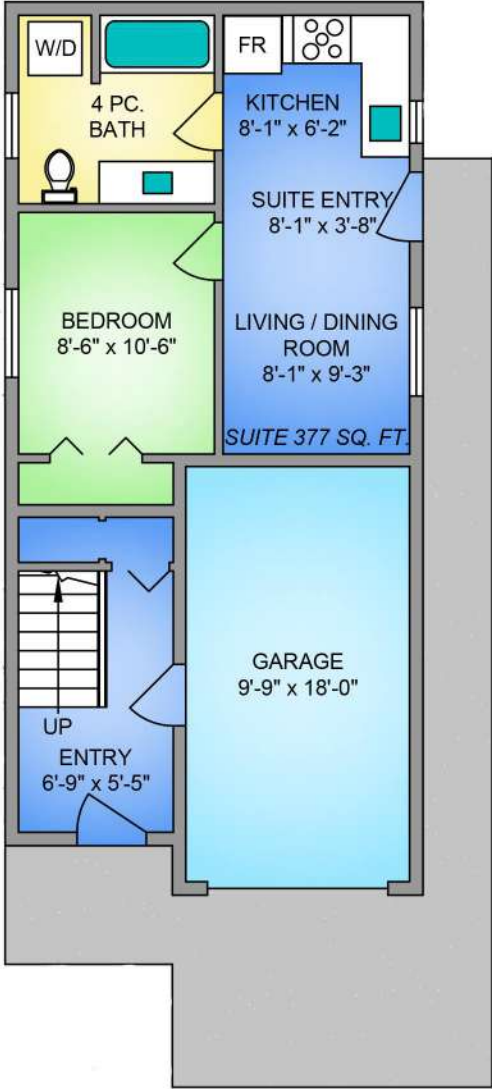
720 SQ. FT.

9'-0" CEILING HEIGHT

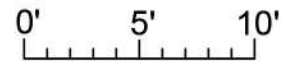
THIRD FLOOR

747 SQ. FT.

8'-0" CEILING HEIGHT



NORTH



SCALE

THE PREFERRED HOMES TEAM  
 RE/MAX CAMOSUN preferredhomes.ca

PROPER MEASURE PRECISION 250-884-9753 matt@propermeasure.com www.propermeasure.com

RosefinchLiving.ca

924 ROSEFINCH PLACE JANUARY 07, 2026			
PREPARED FOR THE EXCLUSIVE USE OF THE PREFERRED HOMES TEAM PLANS MAY NOT BE 100% ACCURATE, IF CRITICAL BUYER TO VERIFY.			
FLOOR	AREA (SQ. FT.)		
	FINISHED	GARAGE	BALCONY
FIRST	487	200	-
SECOND	720	-	62
THIRD	747	-	-
TOTAL	1954	200	62